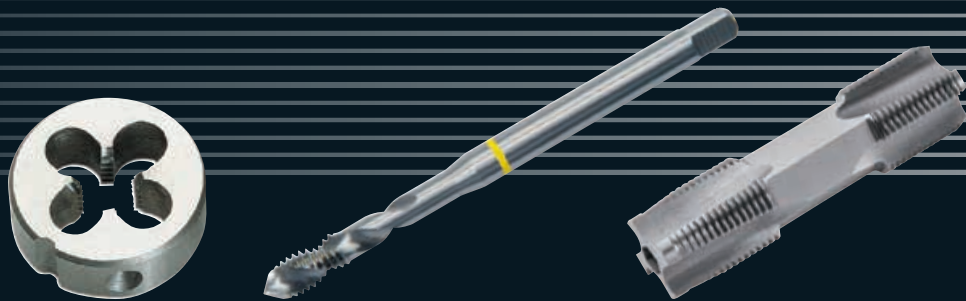


# VÖLKEĻ

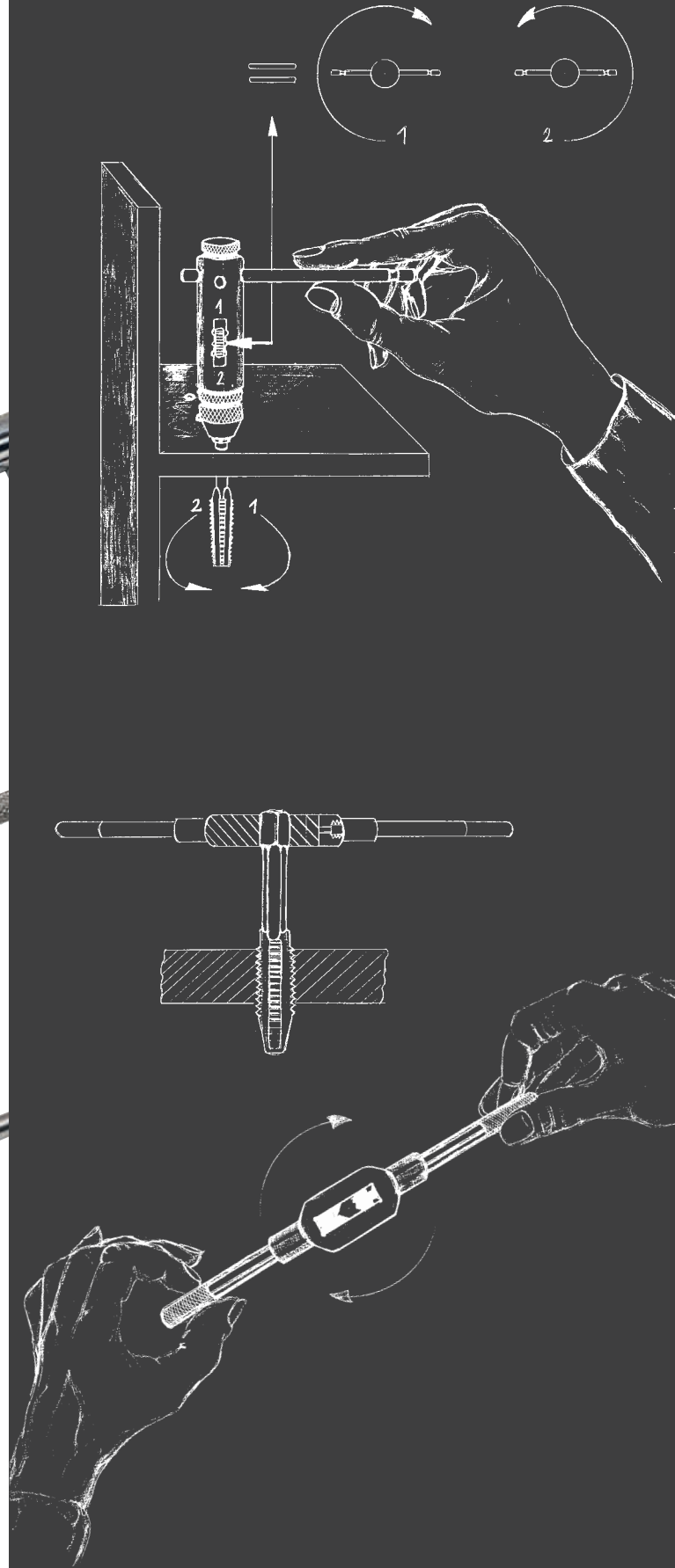
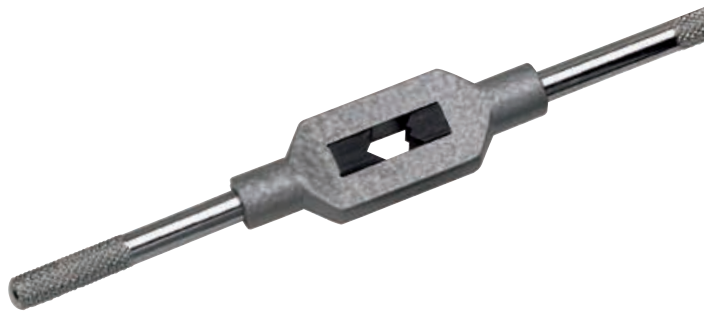
THREADING SOLUTIONS ■ ■ ■



■ ■ ■ ■ ■ ■ ■ ■ VD 2016



# DIE STOCKS - TAP WRENCHES PORTA-UTENSILI





## DIE STOCKS - TAP WRENCHES PORTA-UTENSILI

		Zinc die cast pressogetto di zinco	Steel esecuzione acciaio	Inch misura pollice
Tap Holder with Ratchet Giramaschi con mandrino			10	
Adjustable Tap Wrenches Giramaschi regolabili		12	12	
Die Stocks Portafilieri		11	11	10
Tap Extensions Prolunghe per maschi	13			

## Tap Holder with Ratchet

for right- and left-hand-turn

all steel quality

## Giramaschi con mandrino

per uso fisso, destro e sinistro

esecuzione acciaio



No.	for Taps	Square mm	Length mm	Weight kg		Art.-No.	€
1	M 3-10 1/8-3/8	2.4-5.5	85	0,165	10	10001	8,00
2	M 5-12 7/32-1/2	4.5-8.0	100	0,310	10	10002	9,50
10	M 3-10 1/8-3/8	2.4-5.5	250	0,250	10	10010	13,00
20	M 5-12 7/32-1/2	4.5-8.0	300	0,440	10	10020	16,00

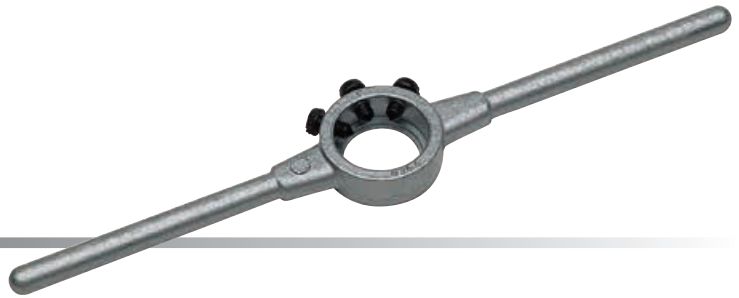
Jaws and Spring for No. 1 und 10	10	10091	1,35
Jaws and Spring for No. 2 und 20	10	10092	2,20

## Die Stocks

Inch - with 3 screws

## Portafiliera misura

pollice con 3 vite



Ø	mm	inch/pollice	Length mm	Weight kg		Art.-No.	€
13/16"	20.6 x 6.35	13/16 x 1/4	200	0,060	5	15520	3,00
1"	25.4 x 9.5	1" x 3/8	224	0,100	5	15525	3,10
1.5/16"	33.4 x 11.1	1.5/16 x 7/16	270	0,180	5	15533	4,60
1.1/2"	38.1 x 12.7	1.1/2 x 1/2	315	0,320	5	15538	8,70
2"	50.8 x 15.9	2" x 5/8	560	0,900	1	15550	13,80
2.1/4"	57.1 x 17.5	2.1/4 x 11/16	560	0,900	1	15557	13,80
2.1/2"	63.5 x 19.0	2.1/2 x 3/4	630	1,400	1	15563	21,50
3"	76.2 x 22.2	3" x 7/8	900	2,200	1	15576	48,50
3.1/2"	88.9 x 25.4	3.1/2" x 1"	900	3,300	1	15588	60,00
4"	101.6 x 25.4	4" x 1"	1000	3,600	1	15599	191,00




## Die Stocks

DIN 225 (DIN EN 22568), Zinc die cast

## Portafiliera

DIN 225 (DIN EN 22568), pressogetto di zinco



Ø x mm	for round Dies DIN 223 (DIN EN 22568)		Length mm	Weight kg		Art.-No.	€	
16 x 5	M	1-2.6	BSW 1/16-3/32	160	0,050	5	15001	2,70
20 x 5	M	3-4	BSW 1/8-5/32	200	0,065	5	15002	2,80
20 x 7	M	4.5-6	BSW 3/16-1/4	200	0,065	5	15003	2,80
25 x 9	M	7-9	BSW 5/16	224	0,105	5	15004	3,20
30 x 11	M	10-11	BSW 3/8-7/16	280	0,190	5	15005	5,20
38 x 10	Mf	12-15	G 1/4	315	0,340	5	15006	8,10
38 x 14	M	12-14	BSW 1/2-9/16	315	0,340	5	15007	8,10
45 x 14	Mf	16-20	G 3/8-1/2	450	0,650	1	15008	9,90
45 x 18	M	16-20	BSW 5/8-13/16	450	0,650	1	15009	9,90
55 x 16	Mf	22-26	G 5/8-3/4	560	0,900	1	15010	12,70
55 x 22	M	22-24	BSW 7/8-1"	560	0,900	1	15011	12,70
65 x 18	Mf	27-36	G 7/8-1"	630	1,400	1	15012	21,40
65 x 25	M	27-36	BSW 1.1/8-1.3/8	630	1,400	1	15013	21,40

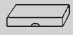
## Die Stocks

DIN 225 (DIN EN 22568), **STEEL**

## Portafiliera

DIN 225 (DIN EN 22568), **esecuzione acciaio**



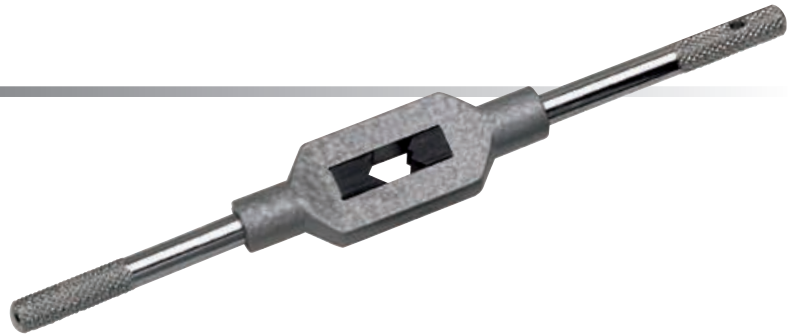
Ø x mm	for round Dies DIN 223 (DIN EN 22568)		Length mm	Weight kg		Art.-No.	€	
45 x 18	M	16-20	BSW 5/8-13/16	450	0,650	1	15209	16,20
55 x 22	M	22-24	BSW 7/8-1"	560	0,900	1	15211	23,10
65 x 25	M	27-36	BSW 1.1/8-1.3/8	630	1,400	1	15213	28,90
75 x 20	Mf	38-42	G 1.1/8-1.1/4	800	2,250	1	15214	48,50
75 x 30	M	38-42	BSW 1.1/2-1.5/8	800	2,100	1	15215	48,50
90 x 22	Mf	45-52	G 1.3/8-1.5/8	900	3,200	1	15216	60,00
90 x 36	M	45-52	BSW 1.3/4-2"	900	3,000	1	15217	60,00
105 x 22	Mf	54-63	G 1.3/4-2"	975	3,500	1	15218	91,50
105 x 36	M	54-63	BSW 2.1/4"-2.1/2"	975	3,500	1	15219	91,50
120 x 22	Mf	64-71	G 2.1/4-2.3/4	956	3,170	1	15220	237,00
120 x 36	M	64-71	BSW 2.3/4"	956	3,910	1	15221	237,00
130 x 25			G 3"	966	3,505	1	15222	329,00
130 x 36				966	4,025	1	15223	329,00
140 x 22				976	3,620	1	15224	413,00
150 x 25			G 3.1/2"	986	3,950	1	15226	470,00
160 x 25			G 4"	996	4,115	1	15228	645,00

## Adjustable Tap Wrenches

DIN 1814 Zinc die cast

### Giramaschi regolabili

DIN 1814, lega leggera



No.	for Taps	Square mm	Length mm	Weight kg		Art.-No.	€
0	M 1-8 1/16-1/4	2.0-5.0	130	0,050	5	13000	3,40
1	M 1-10 1/16-3/8 G 1/8	2.0-6.3	176	0,095	5	13010	3,70
1.1/2	M 1-12 1/16-1/2 G 1/8	2.1-8.0	176	0,120	5	13015	3,70
2	M 4-12 5/32-1/2 G 1/8	3.0-9.0	280	0,285	5	13020	6,00
3	M 5-20 7/32-3/4 G 1/8-1/2	4.9-12	380	0,660	1	13030	11,30
4	M 11-27 7/16-1" G 1/4-3/4	5.5-16	505	1,500	1	13040	20,80
5 L	M 13-32 1/2 -1.1/4 G 1/4-1"	7-20	700	1,800	1	13050	32,00

## Adjustable Tap Wrenches

DIN 1814, **STEEL**

### Giramaschi regolabili

DIN 1814, **esecuzione acciaio**



No.	for Taps	Square mm	Length mm	Weight kg		Art.-No.	€
0	M 1-8 1/16-1/4	2.0-5.0	130	0,050	5	14000	5,00
1	M 1-10 1/16-3/8	2.0-6.3	176	0,100	5	14010	5,70
1.1/2	M 1-12 1/16-1/2 G 1/8	2.1-8.0	176	0,120	5	14015	5,70
2	M 4-12 5/32-1/2 G 1/8	3.0-9.0	280	0,285	5	14020	10,10
3	M 5-20 7/32-3/4 G 1/8-1/2	4.9-12	380	0,660	1	14030	16,00
4	M 11-27 7/16-1" G 1/4-3/4	5.5-16	500	1,500	1	14040	30,00
5	M 13-32 1/2-1.1/4 G 1/4-1"	7-20	700	1,800	1	14050	47,00
6	M 18-42 3/4-1.1/2 G 1/2-1.1/4	11-24	1000	2,600	1	14060	55,00
7	M 27-52 1.1/8-2" G 3/4-1.3/4	16-32	1250	4,500	1	14070	90,00
8	M 27-64 1.1/8"-3" G 3/4-3"	16-40	1250	4,500	1	14080	230,00



### Tap Extensions

DIN 377, Squares according to DIN 10

### Prolunghe per maschi

DIN 377, Quadro in base a DIN 10



Square mm	L1	for DIN 352	Art.-No.	€
2.1	60	M 1-2.6	14521	2,80
2.4	70		14524	2,80
2.7	80	M 3	14527	2,80
3.0	90	M 3.5	14530	2,80
3.4	95	M 4	14534	2,80
3.8	100		14538	3,40
4.3	105		14543	4,00
4.9	110	M 4.5-8	14549	3,20
5.5	115	M 9-10	14555	3,60
6.2	120	M 11	14562	3,90
7.0	125	M 12	14570	4,80
8.0	125		14580	6,00
9.0	130	M 14-16	14590	6,60
10.0	140		14610	8,70
11.0	150	M 18	14611	10,50
12.0	155	M 20	14612	13,70
13.0	165		14613	15,50
14.5	175	M 22-24	14614	19,00
16.0	180	M 27	14616	20,00
18.0	200	M 30	14618	23,50
20.0	220	M 33	14620	30,00
22.0	220	M 36	14622	42,00
24.0	235	M 39-42	14624	54,00
26.0	250		14626	70,00
29.0	265	M 45-48	14629	82,00
32.0	285	M 52	14632	115,00